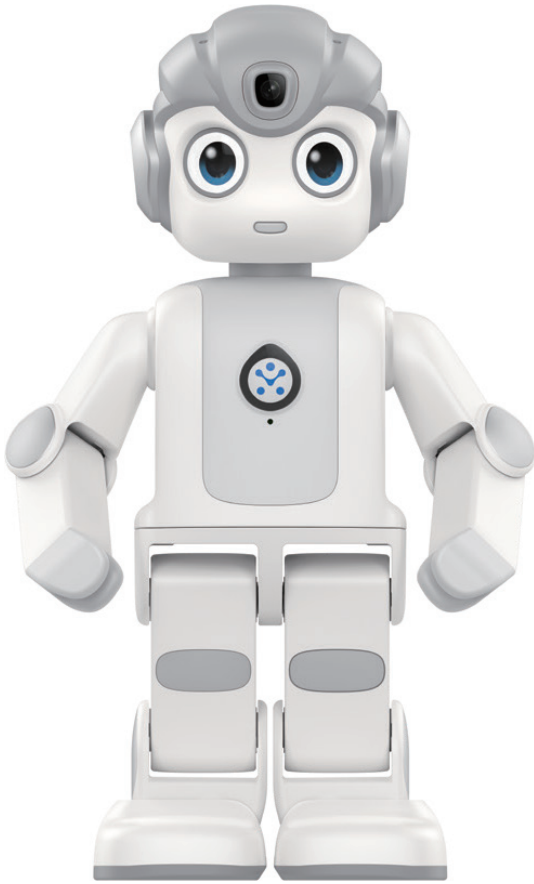


BY ZORA  
BOTS

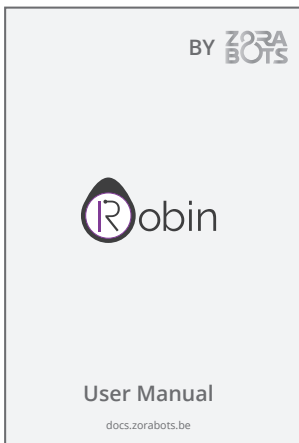


# User Manual

[docs.zorabots.be](https://docs.zorabots.be)



Robin x 1



User Manual x 1



Power adapter x 1

(Design of adapter could differ from EU/UK/US standard, picture may be different from the real delivery)



Type-C cable x 1



SIM card eject pin x 1

## Download and install the ZBOS Software of ZoraBots.

Search for the ZBOS Control app in the App Store or Google Play or scan the QR code to download the app on your mobile device.



Follow the instructions on the application on your mobile device.

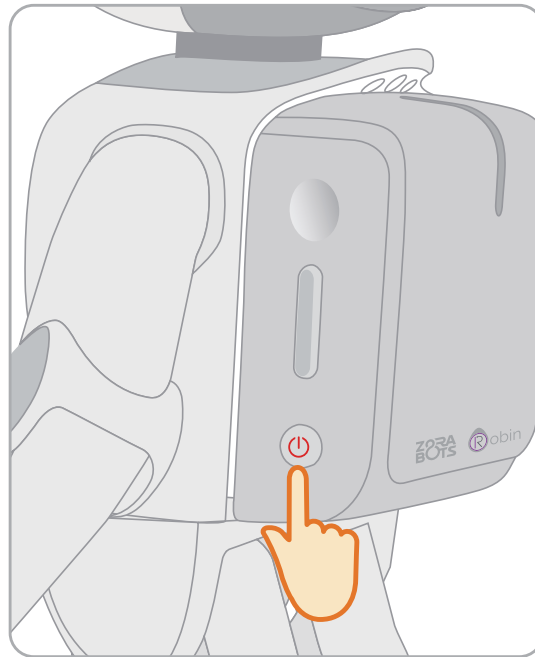
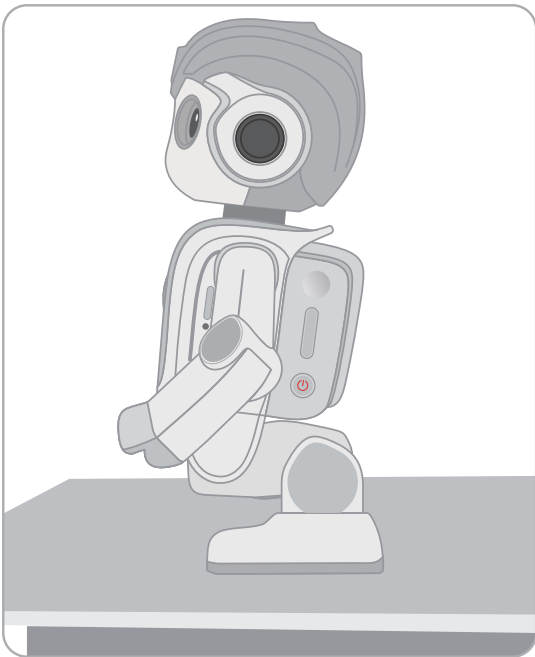
Android and Google Play are trademarks of Google LLC.

App Store is a service mark of Apple Inc.

iOS is a trademark or registered trademark of Cisco in the U.S. and other countries and is used under license.

## Turn your Robot on

- Put the Robin on a table and bend his knees;
- Press and hold his power button until the LED light (his mouth) is on.



### Tips:

Wait for about 40 seconds. When the Robin says "I am ready", you can start using him.

## Link your Robin

- Open the ZBOS app. Select your Robot and log in with your account
- Follow the instructions on the app to connect your Robin to the internet for the binding process.

## Turn your Robin off

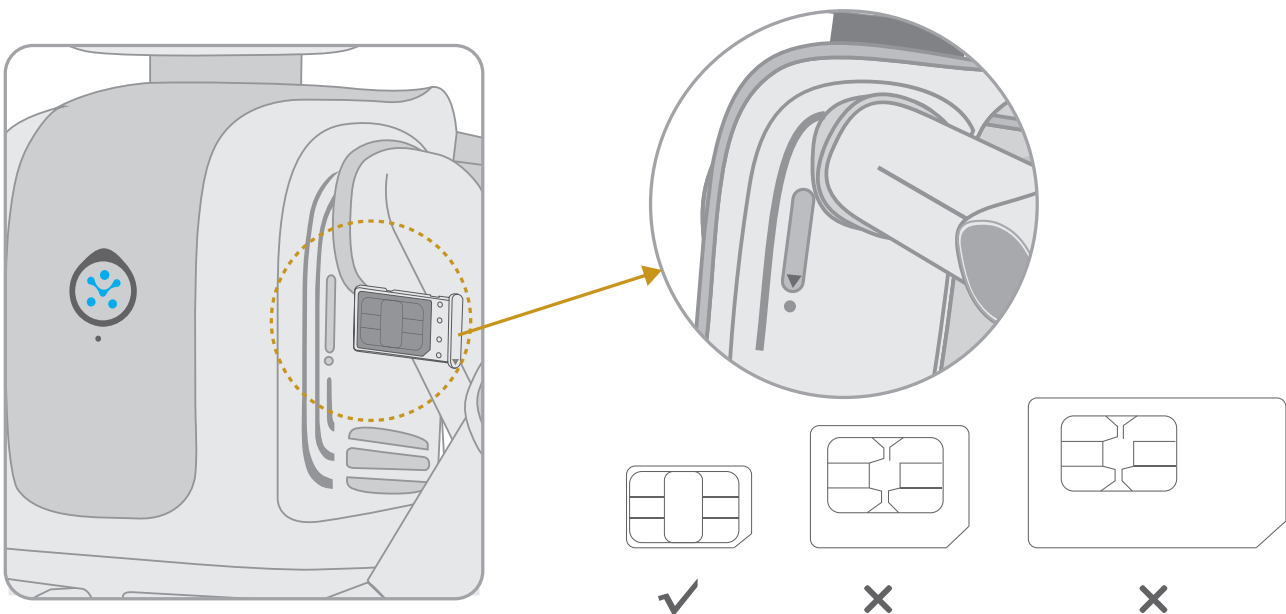
- Press and hold the power button for 3 seconds until your Robin is off;

### SIM card and network service

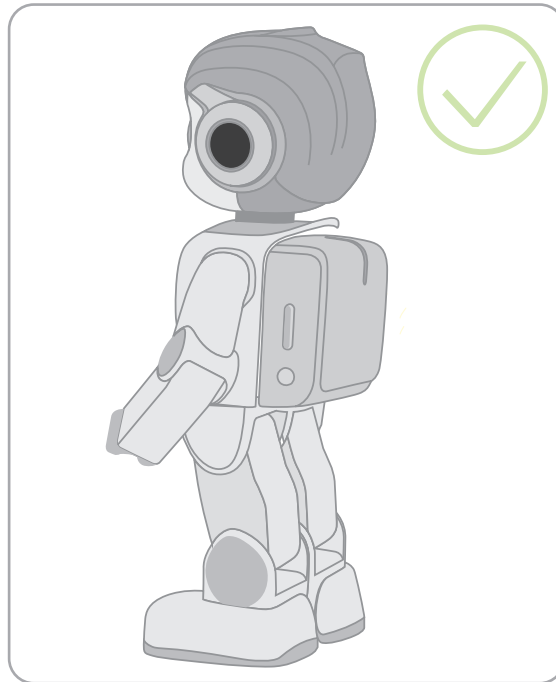
- The Robot support one nano SIM card and 4G network.

#### Install a SIM Card

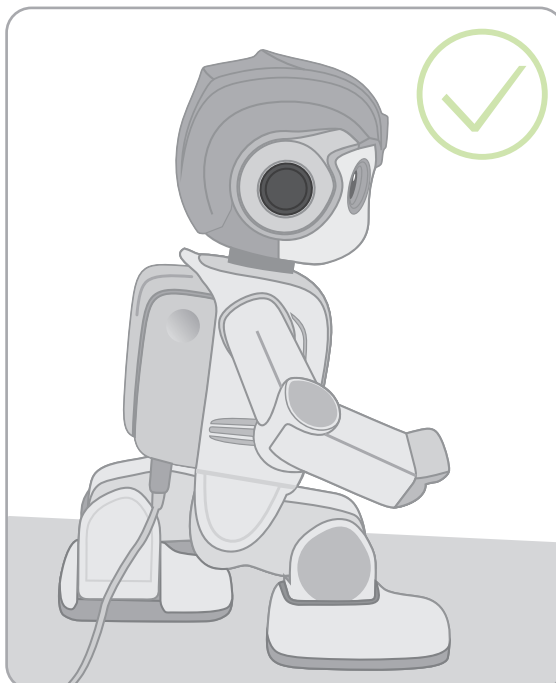
- Turn off your Robin and locate the SIM card slot under his left armpit. Push a SIM eject tool into the small hole next to the SIM slot with a little force to pull the SIM tray out.
- Properly place your SIM card on the tray and follow the instructions below to slide the tray back into your Robin.

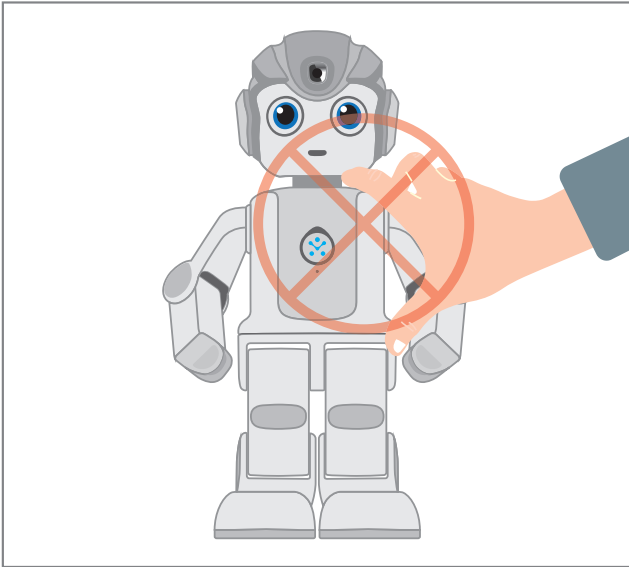


Grab your Robin properly: Use the handy grips of your Robin to pick him up.

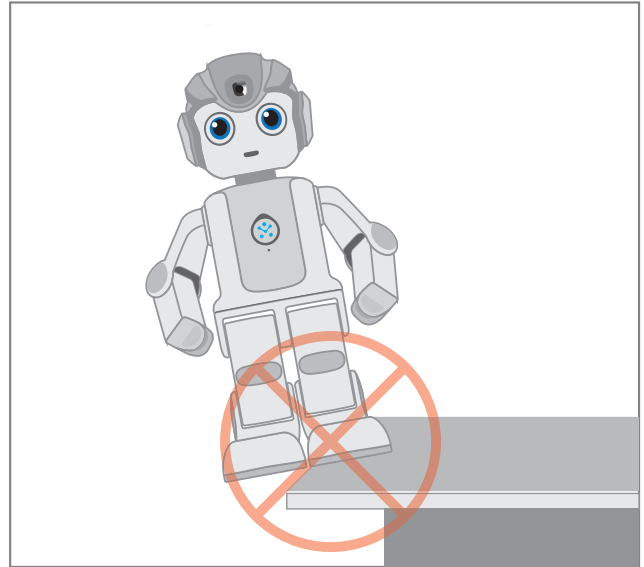


If your Robin is in sleep mode or turned off while charging, please place the Robin in the pose shown below.

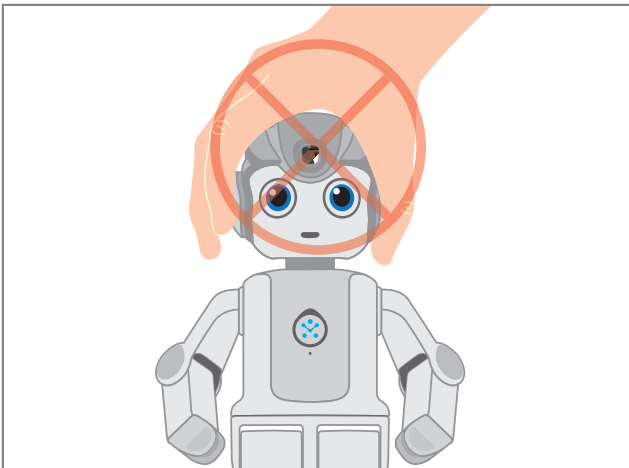




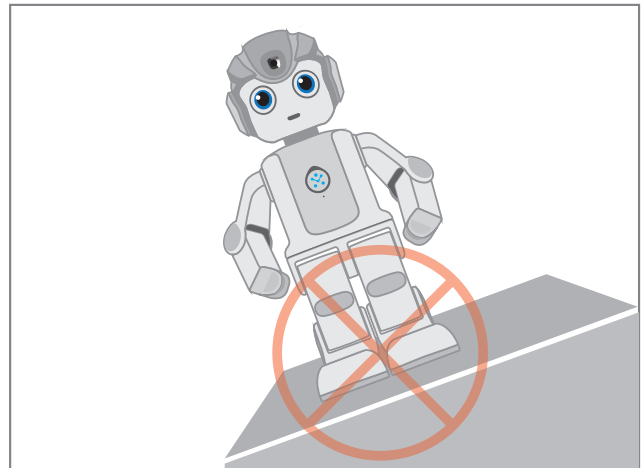
Do not touch your Robin when he is moving to avoid hand injuries.



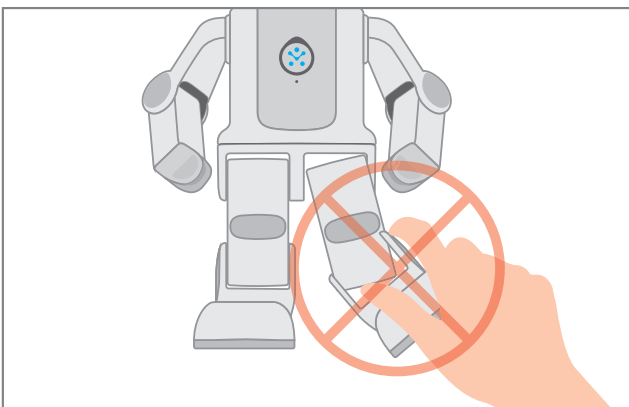
Do not place your Robin at the edge of a table.



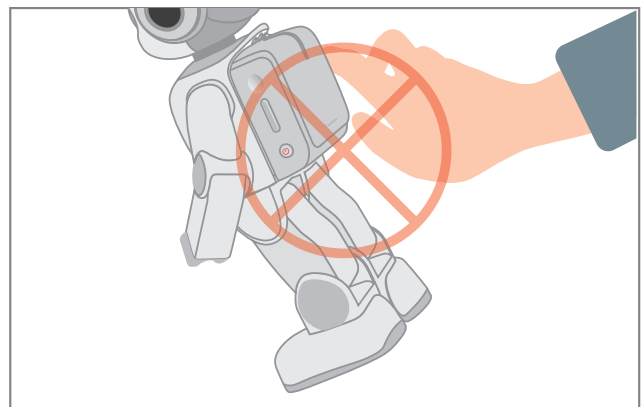
Do not twist or pull Robin's head with force.



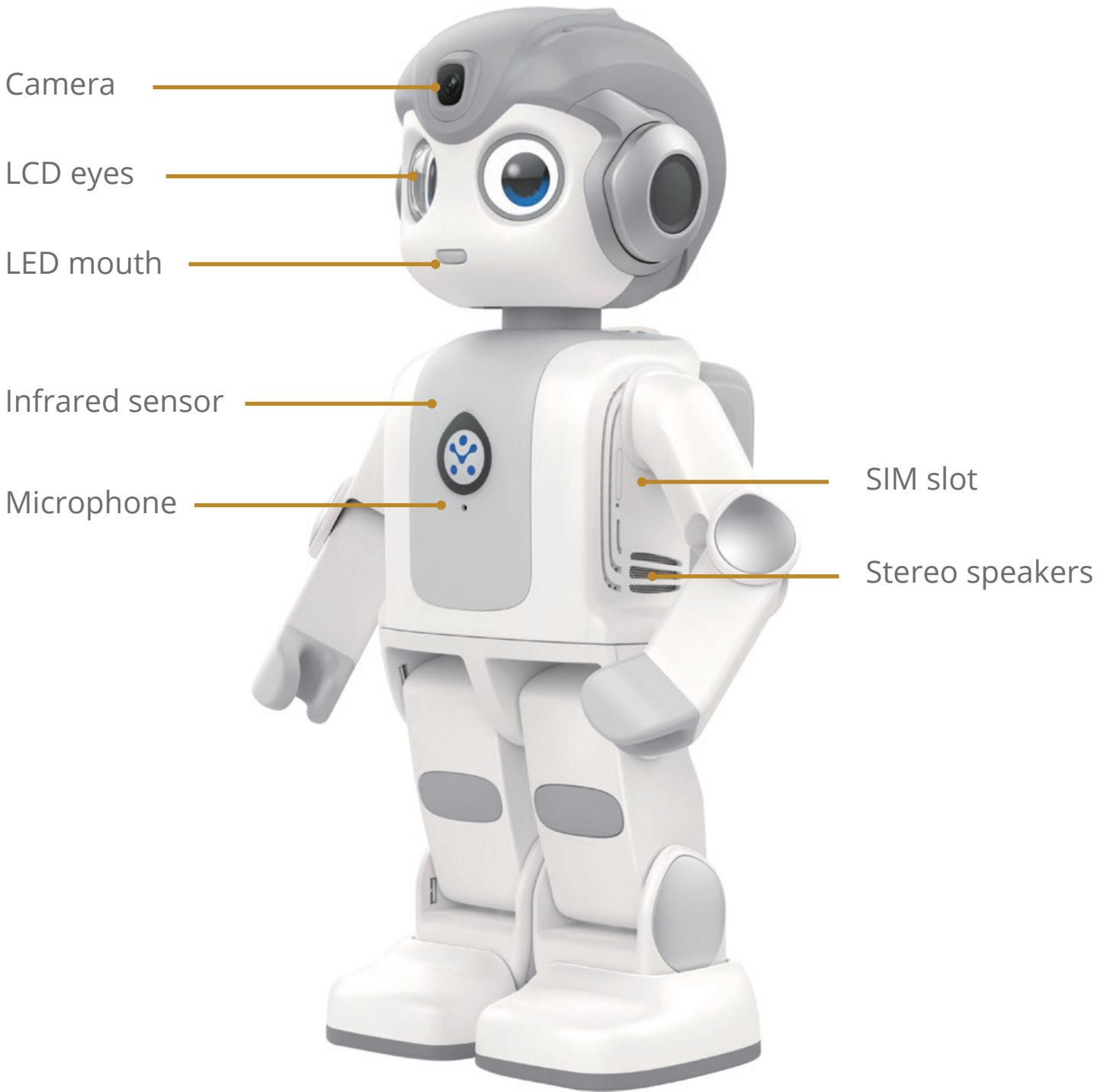
Do not put your Robin on an inclined surface.



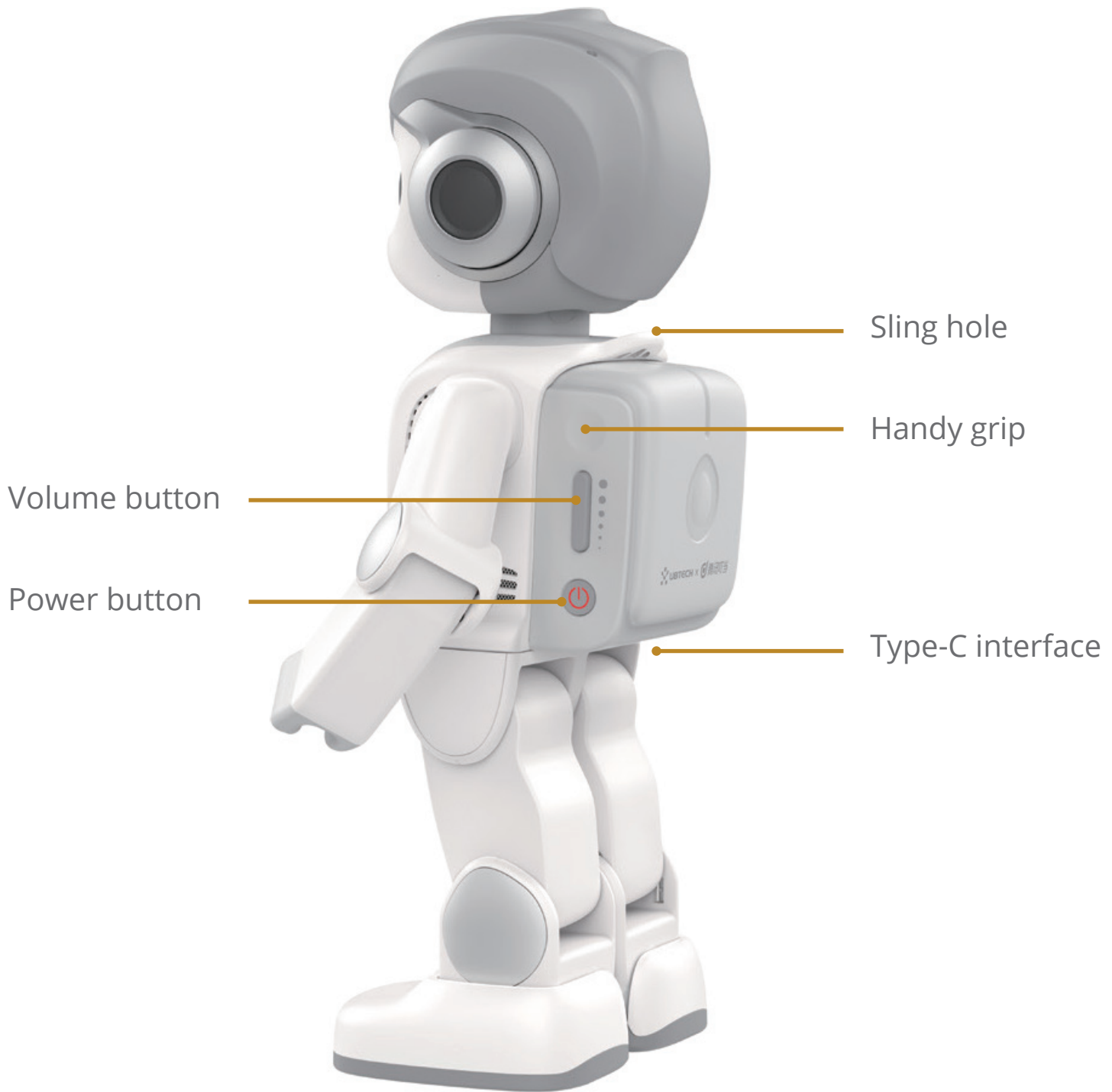
Do not twist the joints of your Robin with force.

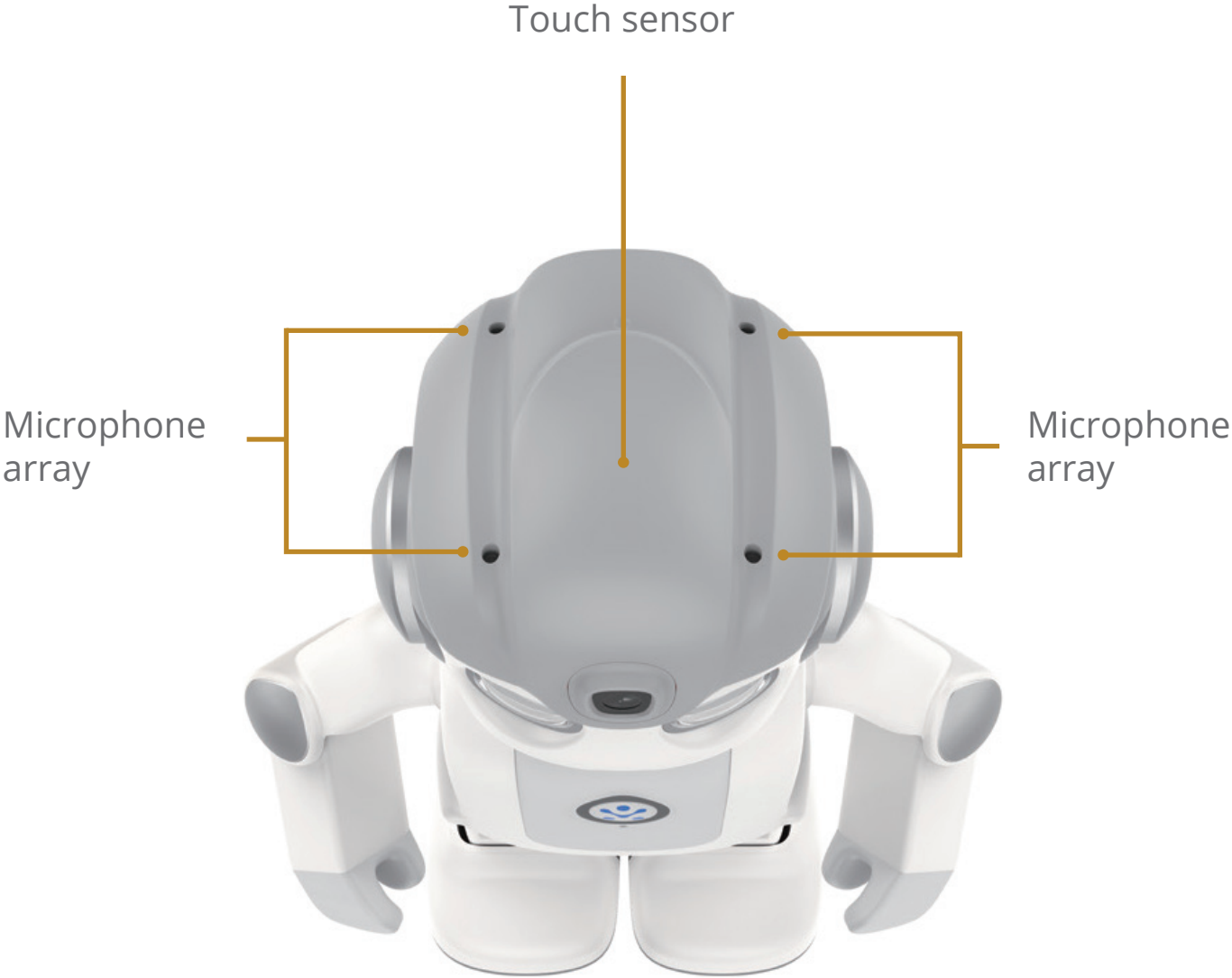


Do not throw or smash your Robin to prevent damage.









<b>Power button</b>	
Press and hold	Press and hold for 3 seconds to turn your Robin on or off.
Press	Press the power button to check the battery level after turning on your robot or during the charging process.

<b>Volume button</b>	
Increase or decrease the volume of your Robin.	

<b>Touch sensor on the head</b>	
Tap your Robot on the forehead to stop the current action.	
Long press to activate the voice recognition.	
Double head tap: scan QR code	
Triple head tap: say IP address	

<b>LED Light in mouth</b>	
While light is flickering	Your Robin is turned on.
Flash red light 3 times every once in a while	Your Robin is offline.
Flickering red light	Your Robin is turned off and charging (Robin battery < 50%).
Flickering green light	Your Robin is turned off and charging (50% ≤ Robin battery < 100%).
Constant green light	Your Robin is off and fully charged.

Product name	AlphaMini Robot
Product model	Alpha Mini
Measurements	Height 245mm, Width 149mm, Thickness 112mm (The actual size may vary slightly depending on the configuration, manufacturing process, and measurement method)
Weight	About 700g
Joints	14 joints in total (3 head joints, 4 arm joints, 1 waist joint, 6 leg joints )
Network standard	4G/3G
Transmission function	WiFi 2.4G (WLAN 80211 b/g/n), BT4.2, GPS
User storage	RAM2GB/ROM16GB (As the Android system has taken up a certain storage, the user storage may be less than this value.)
SIM card type	Nano SIM card (4FF, single card slot)
Speakers	2-channel stereo speakers, 0.8W*2
Microphones	4-microphone array (used for voice interaction and source location), 1 communication microphone
Display screen	1.22 inch (actual visible area is slightly smaller), 262K color TFT display screen, 240*240 pixels
Camera	13 million pixels
Sensors	GPS, accelerometer, gyroscope, touch sensor, Infrared sensor
Battery	Li-Polymer lithium polymer battery, 3,85v, 4060mAh (Typical)
Power adapter	Manufacturer: Jiangxi Jian Aohai Technology Co.,Ltd. Model: A138A-120150U-EU4 / A138A-120150U-UK4 Input AC 100V-240V-50/60Hz 0.5A; Output DC 5V 3A/9V 2A/12V 1,5A
Operating temperatures	0*C-40*C
Control methods	Power button, volume button, App, voice control

Mode	Frequency	Max Emission Power (dBm)
Bluetooth	2402MHz-2480MHz	9.532
BLE	2402MHz-2480MHz	1.146
Wlan 2,4G	2412MHz-2472MHz	16.8
LTE Band1	Uplink:1922.4MHz-1977.6MHz	22.04
	Downlink:2112.4MHz-2167.6MHz	
LTE Band3	Uplink:1710MHz-1785MHz	21.89
	Downlink:1805MHz-1880MHz	
WCDMA Band1	Uplink:1922.4MHz-1977.6MHz	21.68
	Downlink:2112.4MHz-2167.6MHz	
WCDMA Band8	Uplink:882.4MHz-912.6MHz	22.16
	Downlink:927.4MHz-957.6MHz	

- Store this product in a well-ventilated, clean, and dry environment to avoid moisture, dust, and high temperatures, which may damage the product.
- Turn off the product before cleaning it, Wipe its surface with a small amount of neutral detergent and a damp towel. Dry it naturally before turning it on again.
- When not using this product, please turn it off and put it into the product storage box. Charge the product at least once a month to avoid shortening the life of the battery.
- When charging this product, please use the original power adapter and cable, Please consult [support.zorabots.be](https://support.zorabots.be) before replacing a power adapter or a cable.
- When the battery is fully charged, please unplug the charger immediately to avoid unnecessary damage to the battery caused by overcharging.
- This product has a built-in lithium battery. If the battery life is exhausted (when it fails to reach 80% after repeated charging or exhausts 100% of its power reserve within 15 minutes), please contact [support.zorabots.be](https://support.zorabots.be) to ask for professional help.
- When using this product, please place it on a hard horizontal surface and do not hinder its movement. This product needs at least 20cm of clear space above, in front, at the rear, and on both sides.
- When using this product, do not place it at the edge of a surface high above the floor to avoid damage caused by falling.
- Movable joints of this product are all precision parts. Do not twist, pull or squeeze them with force to avoid damage.
- When using this product, it is recommended to operate the designated parts of the product by hand (as illustrated in the instructions above) when it is still. Grasping/operating non-designated parts when the product is moving may cause finger injuries.
- Do not disassemble, refit, and repair this product by yourself. If your product needs to be repaired, please contact [support.zorabots.be](https://support.zorabots.be).
- This product only supports official upgrades. Please do not upgrade the softwares/software systems in other ways to avoid damage or user information leakage.
- In abnormal situations (such as start-up failure, shutdown failure, no response from the robot, or abnormal actions, etc.), please contact [support.zorabots.be](https://support.zorabots.be).



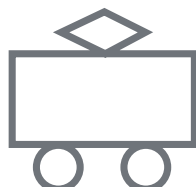
## **WARNING:**

- 1 ) The packaging must be retained since it contains important information.
- 2) The battery charger used with the toy are to be regularly examined for damage to the cord, plug, enclosure and other parts, and in the event of such damage, they must not be used until the damage has been repaired.
- 3) The supply terminals, battery terminals and connectors are not to be short-circuited.
- 4) Misuse of transformer can cause electrical shock.
- 5) The Robot must only be used with the recommended transformer (rated output DC5V, 3A). The transformer is not a toy.
- 6) Choking hazard - small parts inside. The Robot is not intended for children under 3 years old.
- 7) The Robot must be disconnected from the transformer before cleaning.
- 8) Transformers and power supplies for Robots are not intended to be used as toys, and the use of these products by children shall be under the full supervision of parents.
- 9) Be care for hazardous function sharp point on the end of the pin.
- 10) The batteries (battery pack or batteries installed) shall not be exposed to excessive heat such as sunshine, fire or the like.  
Attention should be drawn to environmental aspects of battery disposal.
- 11) Only use attachments/accessories specified or provided by the manufacturer (such as the exclusive supply adapter, battery etc).
- 12) Do not touch the toy when it is moving to avoid hand injuries.
- 13) Disposal of a battery into fire or a hot oven, or mechanically crushing or cutting of a battery, that can result in an explosion.
- 14) Leaving a battery in an extremely high temperature surrounding environment that can result in an explosion or the leakage of flammable liquid or gas.
- 15) A battery subjected to extremely low air pressure that may result in an explosion or the leakage of flammable liquid or gas.
- 16) Keep at least 20cm distance when using the robot.

**CAUTION:** Danger of explosion if battery is incorrectly replaced, Replace only with the same or equivalent type.



means all the safety and operating instructions should be read before this product is operated.





# EU Declaration of Conformity

We UBTECH ROBOTICS CORP LTD

Address: 16th and 22nd Floor, Block C1, Nanshan I Park, No.1001 Xueyuan Road,  
Nanshan District, Shenzhen City, P.R. CHINA.

declare under our sole responsibility that the product

**Product Name:** AlphaMini Robot

**Model name:** Alpha Mini

**Software:** V1.6.0.50

**Accessories:** Adapter 1:  
Model name: A138A-120150U-EU4  
Input:100-240V-50/60Hz 0.5A  
Output:5V 3A/9V 2A/12V 1.5A

Adapter 2:  
Model name: A138A-120150U-UK4  
Input:100- 240V~ 50/60Hz 0.5A  
Output:5V 3A/9V 2A/12V 1.5A

comply with the following directives and regulations:

2014/53/EU (The Radio Equipment Directive)

For the evaluation of the compliance with these Directives and Regulations, the following standards/requirements were applied:

Safety Article 3.1(a)	EN 62368-1:2014/411:2017
EMC Article 3.1(b)	EN 55032:2012 EN 55032:2015 EN 55035:2017 Draft EN 301 489-1 V2.2.1:2019-03 Draft EN 301 489-17 V3.2.0:2017-03 EN 301 489-19 V2.1.1.2019-04 Draft EN 301 489-52 V.1.1.0:2016-11
Radio Article 3.2	EN 300 328 V2.1.1:2016 EN 303 413 V1.1.1 EN 301 908-01 V11.1.1 EN 301 908-02 V11.1.2 EN 301 908-13 V11.1.2
Health Article 3.1(a)	EN 62479:2010 EN 50663:2017 EN 62311:2008 EN 50665:2017

The conformity assessment procedure as referenced in Article 17 and detailed in Annex III of the Radio equipment Directive has been followed with the involvement of a notified body:

Notified Body: TUV SUD TPS

NB No.: 0123

certificate No.: TPS-RED500050 i01

Responsible for making this declaration is the:

Manufacturer

Authorised representative established within the EU

Person responsible for making this declaration

Print name/Title: Wavne cheng/Senior Certification Engineer

Shenzhen China

(Place)

2019-8-16

(Date)

*Wavne Cheng*

(Signature)



**ZoraBots**

Archimedesstraat 17, 8400 Oostende, Belgium

[www.zorabots.be](http://www.zorabots.be)